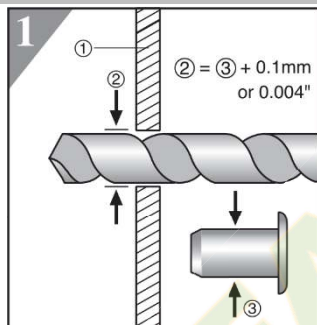


"PROFESIONAL HAND RIVET NUT TOOL"

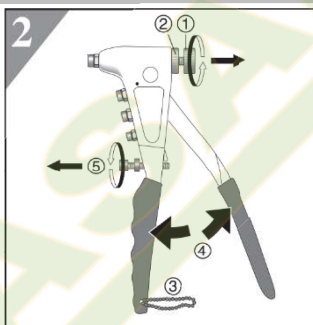


Rev. 1.042015

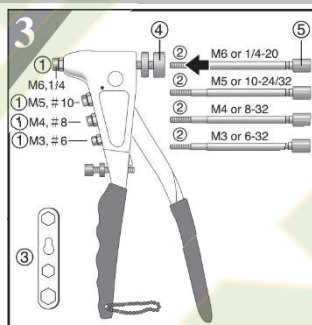
INSTRUCTIONS FOR USE:



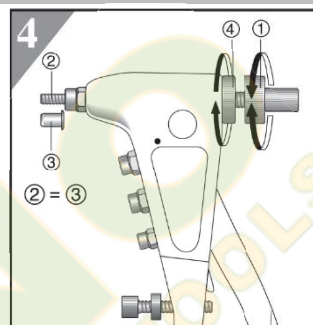
Drill a hole on Workpiece (1), Hole diameter (2) should be 0.1mm or 0.004" larger than Rivet Nut diameter(3).



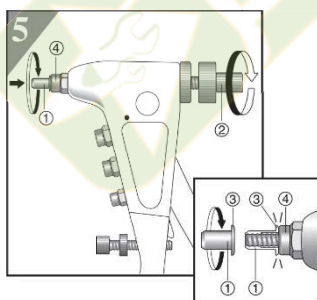
Still lock Tool Handles, turn up Adjusting Knob (1) and Lock Nut (2), then loose Bead Chain Lock (3) to open Tool Handles fully(4), and turn down the Stroke Bolt (5) to the lowest position,



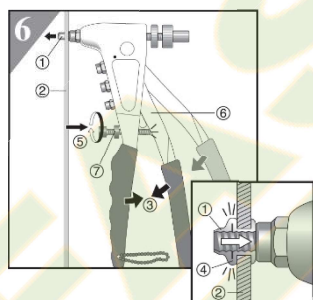
Select Nosepiece (1) and Threaded Mandrel (2) to be same size as Rivet Nut threaded size, exchange Nosepieces (1) by Wrench (3), and insert Threaded Mandrel (2) into Adjusting Knob (4). The Threaded mandrel Knob (5) should touch Adjusting Knob(4).



Rotate Adjusting Knob (1) to adjust thread lenght (2) of Threaded Mandrel to be same as Rivet Nut lenght (3), then turn down the Lock Nut (4) to lock Adjusting Knob (1) position firmly.

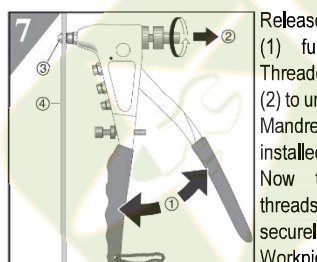


Screw the Rivet Nut (1) onto Threaded Mandrel by turning either Rivet (1) or Threaded Mandrel Knob (2) until Rivet Nut (3) touches Nosepiece (4). The Rivet Nut end should be flush with the Threaded Mandrel end.

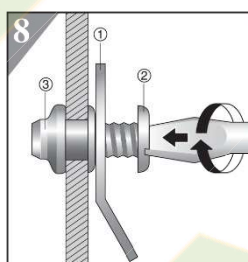


Insert the screwed Rivet Nut (1) into the drilled Hole of Workpiece (2), squeeze Tool Handles (3) until Rivet Nut is installed firmly by forming a bulge (4) against the back of Workpiece (2) still hold Tool Handles (3) and adjust Stroke Bolt (5) up to touch Upper Handle (6), then turn up Stroke Nut (7) to lock Stroke Bolt (5) position. Now the proper Stroke is built up to protect the Rivet Nut threads and this Rivet Nut Tool as well.

NOTE: A proper Stroke ensures Rivet Nut Threads to be installed securely, SO THE PILOT TEST IS ALWAYS RECOMMENDED BEFORE INSTALLING DIFFERENT SIZES OF RIVET NUT.



Release Tool Handles (1) fully and rotate Threaded Mandrel Knob (2) to unscrew Threaded Mandrel from the installed Rivet Nut (3). Now the Rivet Nut threads are built up securely in the Workpiece (4).

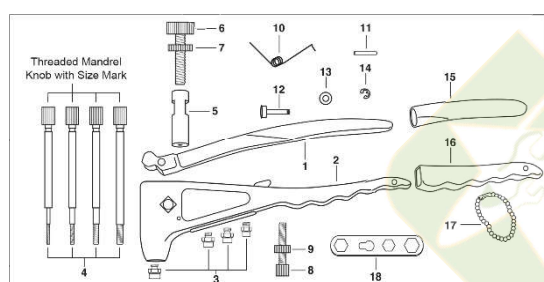


Fasten an Object (1) by screwing a Bolt or a Screw (2) to the installed Rivet Nut (3).

NOTE: If the next fastening Rivet Nut is same size as previous one, Do Not Need Any Adjustment!

Just repeat above 5) to screw Hivel Nut onto Threaded Mandrel, squeeze Tool Handles until Upper Handle touches Stroke Bolt to fasten Rivet Nut, finally follow above 7) to unscrew Threaded Mandrel from the installed Rivet Nut.

PARTS LIST:



N°	Description	N°	Description
1	Upper Handle	11	Torsion spring pin
2	Aluminum Body	12	Fulcrum pin
3	Nosepieces for M3/M4/M5/M6 Rivet Nuts	13	Fulcrum pin bearing
4	Threaded Mandrel for M3X0.5/M4X0.7/M5X0.8/M6X1.0 Rivet Nuts	14	Snap ring
5	Collet Case	15	Upper Grip
6	Adjusting knob	16	Lower Grip
7	Lock nut	17	Bead chain Lock
8	Stroke Bolt	18	Wrench
9	Stroke Nut		
10	Torsion Spring		