

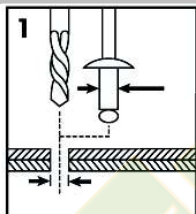
“PROFESSIONAL HAND RIVET TOOL WITH FIXING HAMMER”

FG 260

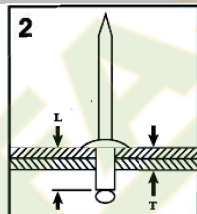


Rev. 1 042015

OPERATION INSTRUCTIONS:

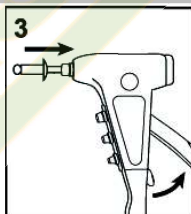


1 Select appropriate Rivet for application and drill same size or a little bigger (0.1mm, 0.004”) hole through materials to be fastened.

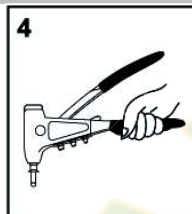


2 Select Rivet Body Leght (L) based on the combined thickness (T) of materials to be fastened. It is suggested:

L-T ≥ 4.0mm or 0.16.

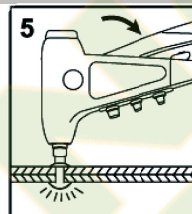


3 Open Tool Handle fully and insert Rivet Mandrel all the way into Tool Working Nosepiece

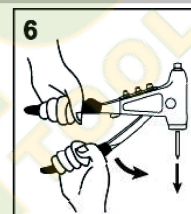


4 Tool Working Nosepiece can hold Rivet nMandrel in any position for convenient use.

NOTE: Hold the Aluminum Body, not the Upper Handle, to keep Rivet Mandrel.

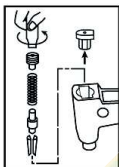


5 Insert Rivet Body into the drilled hole completely. Squeeze Tool Handle until Rivet Mandrel breaks off. If more than one squeeze is required, open Tool Handle fully and squeeze again.

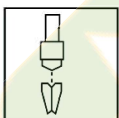


6 Finally open Tool Handle fully to eject spent Mandrel from Tool, either from Working Nosepiece or from Fixing Hammer.

HOW TO CHANGE JAWS, ... PARTS

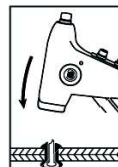


1. Close Tool Handle completely.
2. Remove Fixing Hammer and Retaining Screw with Wrench, then remove Jaw Pusher Spring, Jaw Pusher and Jaws from Collet Case. Pulire o rimettere le Ganasce oliandole esternamente prima di assemblare.
3. Clean or replce Jaws, oiling outside of Jaws before re-assembly.



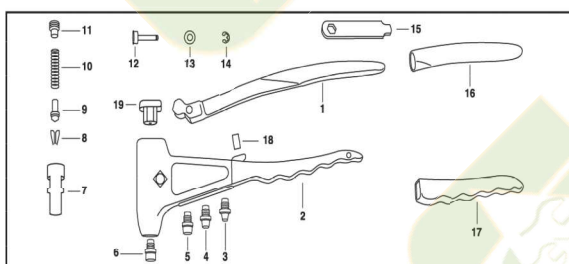
4. Reverse the above steps to reassemble, making sure that bevelled end of Jaw Pusher fits into the bevel provided by the Jaws.

FIXING HAMMER



For hammering down the Burr or protruding Mandrel after setting Blind Rivet, if necessary.

PART DRAWING:



N°	Description	N°	Description
1	Upper handle	11	Retaining screw
2	Aluminum body	12	Fulcrum pin
3	Nosepiece, 2,4mm or 3/32"	13	Fulcrum pin bearing
4	Nosepiece, 3,0/3.2mm or 1/8"	14	Snap ring
5	Nosepiece, 4,0mm or 5/32"	15	Wrench
6	Nosepiece, 4,8/5mm or 3/16"	16	Upper grip
7	Collet case	17	Lower grip
8	Jaws (2 pcs)	18	Shock absorber
9	Jaw pusher	19	Fixing hammer
10	Jaw pusher spring		

NOTE: keep all moving parts oiled.